

# Lung Cancer Screening



**easy  
read**

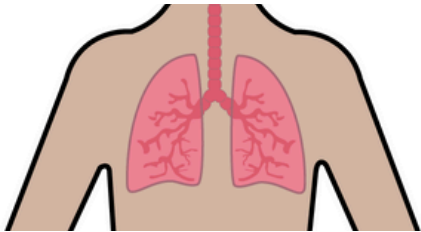


Cheshire & Merseyside  
Cancer Voices

CHESHIRE & MERSEYSIDE CANCER ALLIANCE



# Lung Cancer Screening



Lung Cancer Screening is being offered to people in your area, aged between 55 and 74, who smoke or used to smoke.



You will get a text message or a letter from the NHS with an appointment.

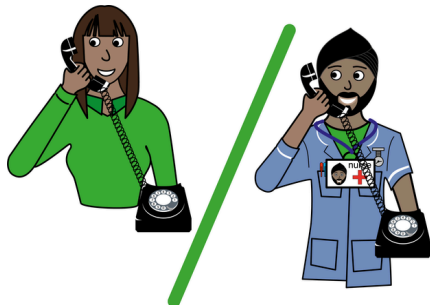


You have been offered Lung Cancer Screening because we want to find out how well your lungs are working.



A lung screening check can help to find problems early – often before you notice anything is wrong.

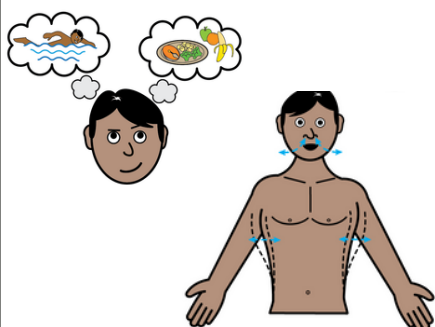
# What happens at a Lung Cancer Screening check



The lung check team will call you on the phone for your appointment.



Your lung check will take about 30 minutes.



The team will ask you some questions about your breathing.

They will ask you about your everyday life, your family and your health.



The team may talk to you about having a lung scan.

A lung scan checks for lung cancer.



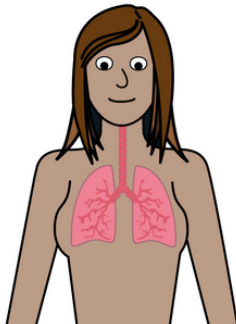
## Your information

They will ask you if they can share your lung check information with your GP.



## Asking questions

There will be plenty of time to chat to the lung check team to ask questions.



## Different to NHS health checks

NHS Lung Cancer Screening is different to NHS health checks.



Even if you've recently been for a NHS health check, you should still think about going to your Lung Cancer Screening.

# The result of your Lung Cancer Screening



At the end of the Lung Cancer Screening, we will tell you **1** of the following results from the check:

## **1. No problems found**

We will write to your doctor so they know about the check.



## **2. Go and see your doctor**

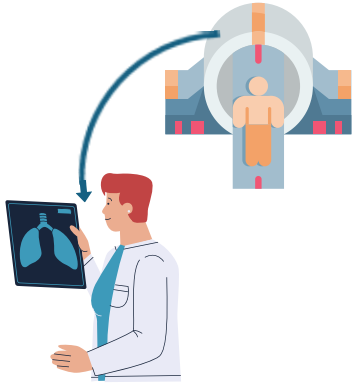
If we find problems with your breathing or lungs, the team may suggest you go to see your doctor.

We will write to your doctor so they know about the check.



## **3. Offer you a lung cancer scan**

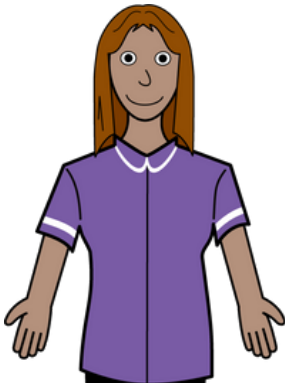
We will suggest you go for a lung cancer scan if you might be at a higher risk of developing lung cancer.



The scan is called a CT scan.

The scan won't hurt you and is quite quiet.

A scan is where we take pictures of the inside of your body.



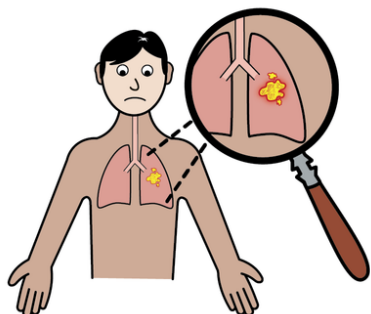
The Lung Cancer Screening team will help you to choose whether the scan is right for you.

We will write to your doctor so they know about the check.



You can bring someone with you to your CT Scan appointment.

# What is lung cancer?



**Lung cancer** is one of the most common types of cancer.



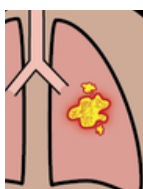
At the start, there are usually no signs that you have lung cancer, meaning it could go undetected.



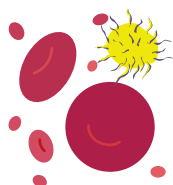
Finding cancer earlier means that it can be treated. The NHS set up Lung Cancer Screening so we can find and treat lung cancer early.



All of your body is made up of tiny **cells**.



A **tumour** is a lump of cancer **cells**.



**Lung cancer** is when some of your **cells** grow to form a **tumour** in your lung.

# What happens during a lung cancer scan?



You will lie flat on your back on a bed that moves slowly into a machine called a scanner.



The scanner is shaped like a donut and it will move around your chest.

Staff control the scanner from behind a screen. You can see and speak to them during the scan.



You will need to lie still for about 10 seconds. The staff will tell you how to breathe during the scan.



You won't feel anything.

You can eat, drink or drive as normal after your scan.

# Choosing to have a scan



It's up to you if you have a scan or not. Having a scan means that we are more likely to find problems early.



If we find lung cancer early:

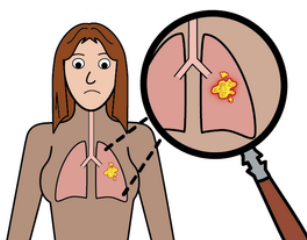
- There's a higher chance it can be cured.



- The treatment is simpler



- You are less likely to die from lung cancer



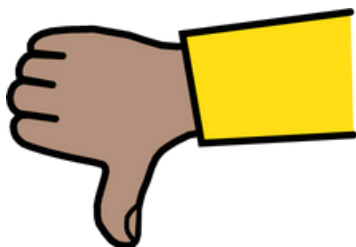
It is better to find your lung cancer when it is small, before it spreads to the rest of your lungs.

# What can be the problems with a scan?



## Radiation

A dose of radiation can cause harm. But we use a dose of radiation that is very low.



## Sometimes the scan misses lung cancer

Sometimes the scan does not show that you have lung cancer, but this is very uncommon.



Sometimes the scan shows that you may have lung cancer, but you don't.

This will lead you to having more tests, which can be worrying.



Sometimes the scan will pick up something that would never cause you any harm. This would also lead to more tests that may be worrying.

You will be supported throughout the process.

# The results of your scan



You will get your results within 2 weeks. We will write to you and your doctor with the results of the scan.

There are **3** different results from your scan. They may be:



## 1. We found nothing wrong

We will write to you with the results and ask you to come back for another scan in two years.

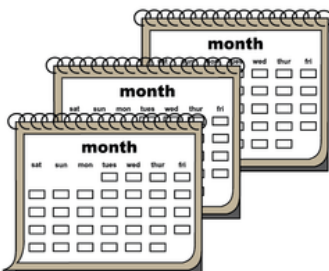


Three out of every four people who have a scan have nothing wrong.



## 2. You need another scan

This usually means that we saw something that we need to check again.



We will write to you and your doctor and ask you to come for another scan.

This could be in 3 months, 6 months or 12 months time.



About 1 in every 6 people need to go for another scan.



### 3. Something's wrong

This means we have seen something and we want you to come for more tests.



About 1 in every 12 people that we scan need to go for more tests.



We will call you and write to the hospital so you can be seen by a healthcare professional.

Around half of the people who need more tests will have lung cancer.

# Signs and symptoms of lung cancer

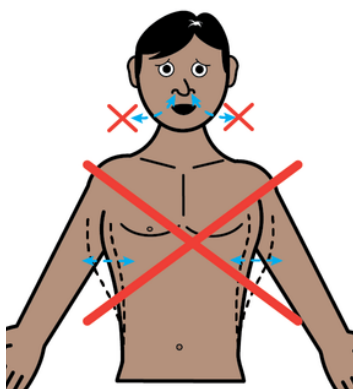
You need to look out for anything unusual like:



- A cough that doesn't stop



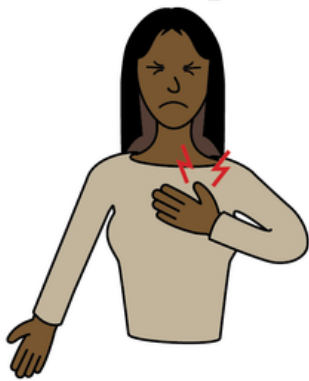
- Coughing up blood



- Being short of breath



- Getting very tired or losing weight



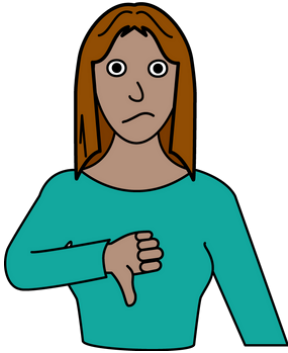
- An ache or pain when you breath or cough



- Not wanting to eat anything



If you notice any of these things you should call your GP practice.



## 4. Something else is wrong

There is no sign of lung cancer but the scan makes us think that you may have another problem.



You may need to see your doctor or another doctor.



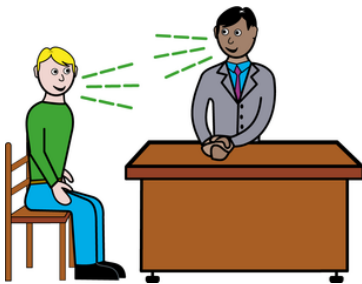
We will write to you and your doctor.

# Support to stop smoking



The best thing to reduce your chances of getting lung cancer is to not smoke.

If you do smoke and you would like to stop:



- Speak with your doctor



- Phone NHS Smokefree on **0300 123 1044**



- Go to: **[www.nhs.uk/smokefree](http://www.nhs.uk/smokefree)**

# For more information

If you need more information please contact:



## NHS Lung Cancer Information

[www.nhs.uk/conditions/lung-cancer](http://www.nhs.uk/conditions/lung-cancer)



## NHS Smokefree

[www.nhs.uk/smokefree](http://www.nhs.uk/smokefree)



## Roy Castle Lung Cancer Foundation

[www.roycastle.org/information](http://www.roycastle.org/information)



[www.roycastle.org/help-and-support](http://www.roycastle.org/help-and-support)

Phone: **0333 323 7200**





## Cancer Research UK

[www.cruk.org/lunghealthchecks](http://www.cruk.org/lunghealthchecks)



[www.cruk.org/about-cancer/lung-cancer](http://www.cruk.org/about-cancer/lung-cancer)



[www.cruk.org/smoking](http://www.cruk.org/smoking)



Phone: **0808 800 4040**

